

NEW

THEY WEAR
VEGA
TAILORED FIT
JACKET

JULIET
SKIRT




Design-led tailoring.

NEW
STYLE

ECLIPSE
COLLECTION

DESIGN-LED

For companies looking to present a stylish edge to their staff. With design in its DNA this range combines fine tailored lines, fashionable pin dot weaves and a durable Teflon coating - providing the perfect mix of form and function. Our Eclipse Collection delivers on trend, on time and on budget. 2020 sees the launch of a new women's jacket, featuring recycled polyester.

14 Mix & Match Styles	Slim Fit Tailored Fit	Available in 4 colours
 64% Polyester 34% Viscose 2% Lycra	 330gm Midweight Fabric	 40° Machine Washable
 Very Durable - Martindale Test > 100,000 rubs	← 14% → High Level of Stretch	 High Level of Stain Resistance



15 Recycled bottles
used per suit
NEW Vega Jacket

MEN'S
JACKETS

PEGASUS Slim Fit Jacket	92 - 93
PHOENIX Tailored Fit Jacket	93

TROUSERS

PEGASUS Slim Fit Trousers	94
PHOENIX Tailored Fit Trousers	95

WAISTCOAT

PROTEUS Tailored Fit Waistcoat	93
--------------------------------	----

WOMEN'S
JACKETS

NEW VEGA Tailored Fit Jacket	96 - 97
ARIEL Slim Fit Jacket	97
CORDELIA Tailored Fit Jacket	97

TROUSERS

OPHELIA Slim Leg Trousers	98
BIANCA Tailored Leg Trousers	98

WAISTCOAT, SKIRT & DRESSES

JULIET Skirt	99
LARISSA Tailored Fit Waistcoat	99
CRESSIDA Dress	100
PORTIA Dress	101

COLLECTION SUMMARY
COLOUR CHOICE AND AFTERCARE

Eclipse Collection & Fabric Information	102 - 105
---	-----------

PARTICULARLY SUITABLE FOR:



Office teams



Hotels



Front of house



Retail



Hospitality



Health sectors



Education



Facilities Management



Security

PEGASUS
SLIM FIT JACKET
3551A Navy Pin Dot



PHOENIX
TAILORED FIT
JACKET
3552C Charcoal Pin Dot



PROTEUS
WAISTCOAT
1449B Navy



PEGASUS
SLIM FIT JACKET
3551 A,B,C,D

Sizes:
34" - 44" short
34" - 46" regular
34" - 44" long

Centre back length
at size 40R = 76cm



PHOENIX
TAILORED FIT JACKET
3552 A,B,C,D

Sizes:
36" - 48" short
34" - 56" regular
38" - 48" long

Centre back length
at size 40R = 77cm



PROTEUS
WAISTCOAT
1449 A,B,C,D

Sizes:
34" - 56" regular

Centre back length
at size 40R = 62cm



PEGASUS
SLIM FIT TROUSER
8754 A,B,C,D

Sizes:
28" - 40" waist in leg lengths
S-29.5", R-31.5", L-33"
& 36" unfinished

Half hem width at
waist size 34" = 19cm

SLIM FIT

8754D Black

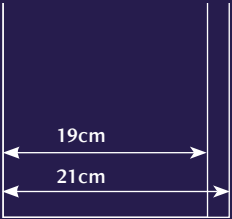
PHOENIX
TAILORED FIT TROUSER
8755 A,B,C,D

Sizes:
28" - 52" waist in leg lengths
S-29.5", R-31.5", L-33"
& 36" unfinished

Half hem width at
waist size 34" = 21cm

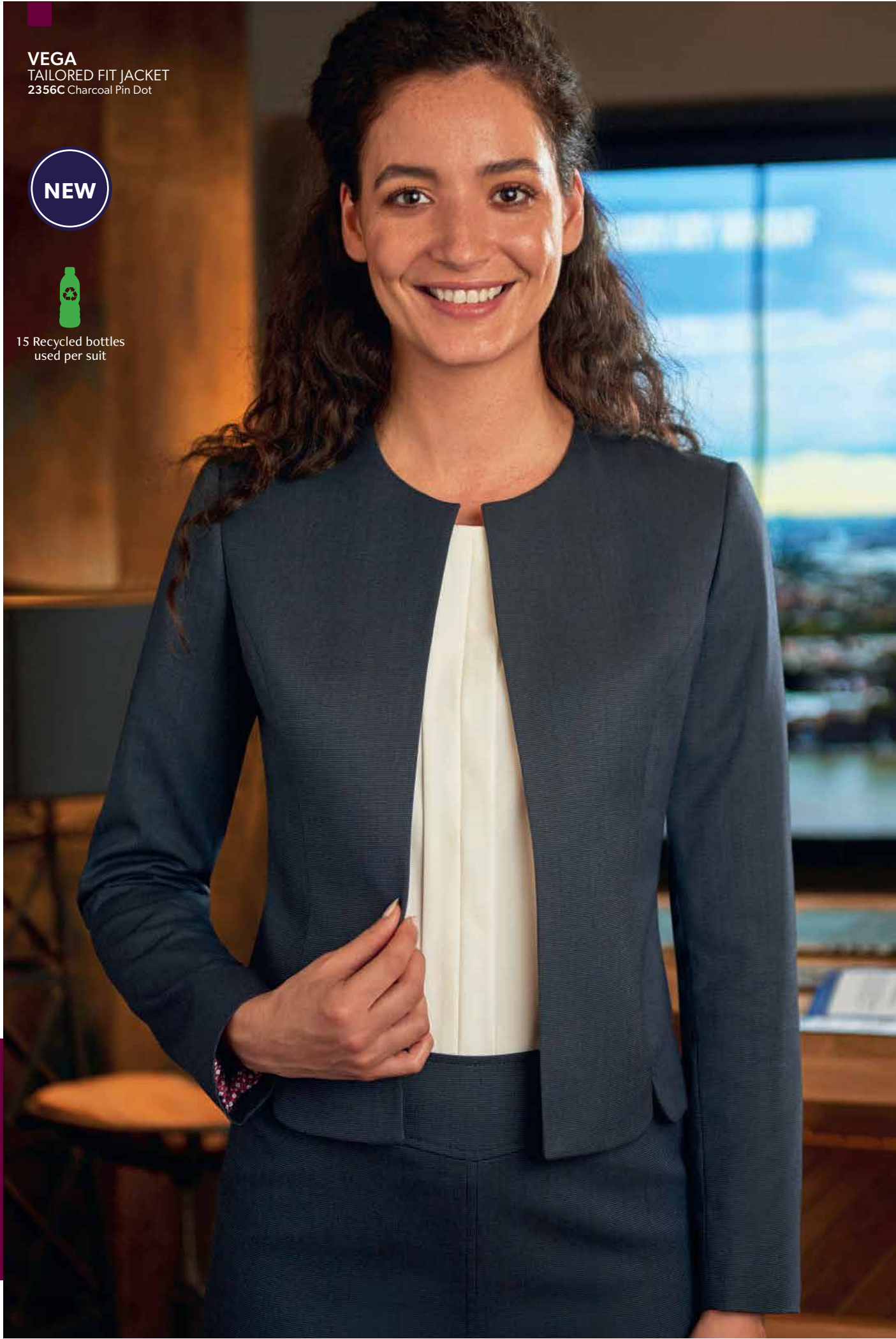
TAILORED FIT

2 Trousers hem widths



8755B Navy





VEGA
TAILORED FIT JACKET
2356C Charcoal Pin Dot

NEW



15 Recycled bottles
used per suit



ARIEL
SLIM FIT JACKET
2272D Black



CORDELIA
TAILORED FIT JACKET
2273C Charcoal Pin Dot

NEW



VEGA
TAILORED FIT JACKET
2356 A,B,C,D

Sizes:
6 - 16 short
6 - 24 regular
6 - 16 long

Centre back length
at size 12R = 50cm



15 Recycled bottles
used per suit



ARIEL
SLIM FIT JACKET
2272 A,B,C,D

Sizes:
6 - 16 short
4 - 24 regular
6 - 16 long

Centre back length
at size 12R = 55cm



CORDELIA
TAILORED FIT JACKET
2273 A,B,C,D

Sizes:
6 - 18 short
4 - 30 regular
6 - 18 long

Centre back length
at size 12R = 63cm





2276A Navy Pin Dot

SLIM LEG

OPHELIA
SLIM LEG TROUSER
2276 A,B,C,D

Sizes:
4 - 24 waist in leg lengths
S-27", R-29", L-31", XL-33"
& 36" unfinished

Half hem width at size 12 = 16cm



2277C Charcoal Pin Dot

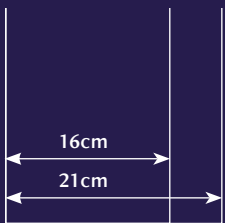
TAILORED LEG

BIANCA
TAILORED LEG TROUSER
2277 A,B,C,D

Sizes:
6 - 30 waist in leg lengths
S-27", R-29", L-31", XL-33"
& 36" unfinished

Half hem width at size 12 = 21cm

2 Trousers hem widths



JULIET
SKIRT
2275 A,B,C,D

Sizes:
4 - 24 regular - 22"
8 - 30 long - 25"



2275D Black

LARISSA
WAISTCOAT
2293 A,B,C,D

Sizes:
6 - 24 regular

Centre back length
at size 12R = 51cm



2293B Navy



2285C Charcoal Pin Dot



CRESSIDA
DRESS
2285 A,B,C,D

Sizes:
6 - 24 regular
8 - 20 long

Centre back length
at size 12R = 97cm

2274D Black



PORTIA
DRESS
2274 A,B,C,D

Sizes:
4 - 24 regular
8 - 20 long

Centre back length
at size 12R = 97cm



WOMEN'S ECLIPSE SUMMARY



VEGA JACKET
TAILORED FIT
Charcoal Pin Dot

Tailored fit, collarless styling with curved vents, 2 internal jett pockets, curved front/back seams.

Sizes:
6 - 16 short
6 - 24 regular
6 - 16 long

Code & Colours:
2356 A / B / C / D

Centre back length at size 12R = 50cm

2020 sees the launch of the VEGA jacket, the first style in the Eclipse Collection to use RECYCLED POLYESTER in the fabric blend. As part of our commitment to sustainable sourcing and manufacturing, this simple fabric change diverts 15 BOTTLES PER SUIT from landfill, reducing soil contamination and air & water pollution. What's more, recycled polyester requires less energy in production than virgin polyester. Recycled polyester will be rolled out throughout the entire ECLIPSE COLLECTION during 2020.

15 Recycled bottles used per suit



ARIEL JACKET
SLIM FIT
Navy Pin Dot

1 button jacket, centre vent.

Sizes:
6 - 16 short
4 - 24 regular
6 - 16 long

Code & Colours:
2272 A / B / C / D

Centre back length at size 12R = 55.5cm



OPHELIA TROUSER
SLIM LEG
Navy Pin Dot

Side pockets, mock hip pockets.

Sizes:
4 - 24 waist in leg lengths
S-27", R-29", L-31", XL-33" & 36" unfinished

Code & Colours:
2276 A / B / C / D

Half hem width at size 12R = 16cm



CORDELIA JACKET
TAILORED FIT
Charcoal Pin Dot

2 button jacket, centre vent.

Sizes:
6 - 18 short
4 - 30 regular
6 - 18 long

Code & Colours:
2273 A / B / C / D

Centre back length at size 12R = 63cm



BIANCA TROUSER
TAILORED LEG
Charcoal Pin Dot

Side pockets, mock hip pockets.

Sizes:
6 - 30 waist in leg lengths
S-27", R-29", L-31", XL-33" & 36" unfinished

Code & Colours:
2277 A / B / C / D

Half hem width at size 12R = 21cm



LARISSA WAISTCOAT
Black

Notch lapels, 5 button front, cloth backed, 2 welt pockets.

Sizes:
6 - 24 regular

Code & Colours:
2293 A / B / C / D

Centre back length at size 12R = 51cm



CRESSIDA DRESS
Navy Pin Dot

V-neck, caped sleeve, front crossover and pleat detail, side vents.

Sizes:
6 - 24 regular
8 - 20 long

Code & Colours:
2285 A / B / C / D

Centre back length at size 12R = 97cm



JULIET SKIRT
Charcoal Pin Dot

Straight skirt, rear panel detail with centre vent, full stretch lining.

Sizes:
4 - 24 regular - 22"
8 - 30 long - 25"

Code & Colours:
2275 A / B / C / D



PORTIA DRESS
Charcoal Pin Dot

Short sleeve, centre back vent, waistline darts.

Sizes:
4 - 24 regular
8 - 20 long

Code & Colours:
2274 A / B / C / D

Centre back length at size 12R = 97cm



Form meets function.

64% Polyester
34% Viscose
2% Lycra

330gm
Midweight
Fabric

40°
Machine
Washable

Very Durable -
Martindale Test
> 100,000 rubs

← 14% →
High Level
of Stretch

High Level
of Stain
Resistance



A. Navy Pin Dot

B. Navy

C. Charcoal Pin Dot

D. Black

MEN'S ECLIPSE SUMMARY



PEGASUS JACKET

SLIM FIT
Charcoal Pin Dot

1 button jacket, twin rear vents.

Sizes:
34" - 44" short
34" - 46" regular
34" - 44" long

Code & Colours:
3551 A / B / C / D

Centre back length at size 40R = 76cm



PEGASUS TROUSER

SLIM FIT
Navy Pin Dot

Flat front.

Sizes:
28" - 40" waist in leg lengths
S-29.5", R-31.5", L-33" & 36" unfinished

Code & Colours:
8754 A / B / C / D

Half hem width at waist size 34" = 19cm



PHOENIX JACKET

TAILORED FIT
Navy Pin Dot

2 button jacket, twin rear vents.

Sizes:
36" - 48" short
34" - 56" regular
38" - 48" long

Code & Colours:
3552 A / B / C / D

Centre back length at size 40R = 77cm



PHOENIX TROUSER

TAILORED FIT
Charcoal Pin Dot

Flat front.

Sizes:
28" - 52" waist in leg lengths
S-29.5", R-31.5", L-33" & 36" unfinished

Code & Colours:
8755 A / B / C / D

Half hem width at waist size 34" = 21cm



PROTEUS WAISTCOAT

Charcoal Pin Dot

Notch lapels, 5 button front,
cloth backed, 2 welt pockets.

Sizes:
34" - 56" regular

Code & Colours:
1449 A / B / C / D

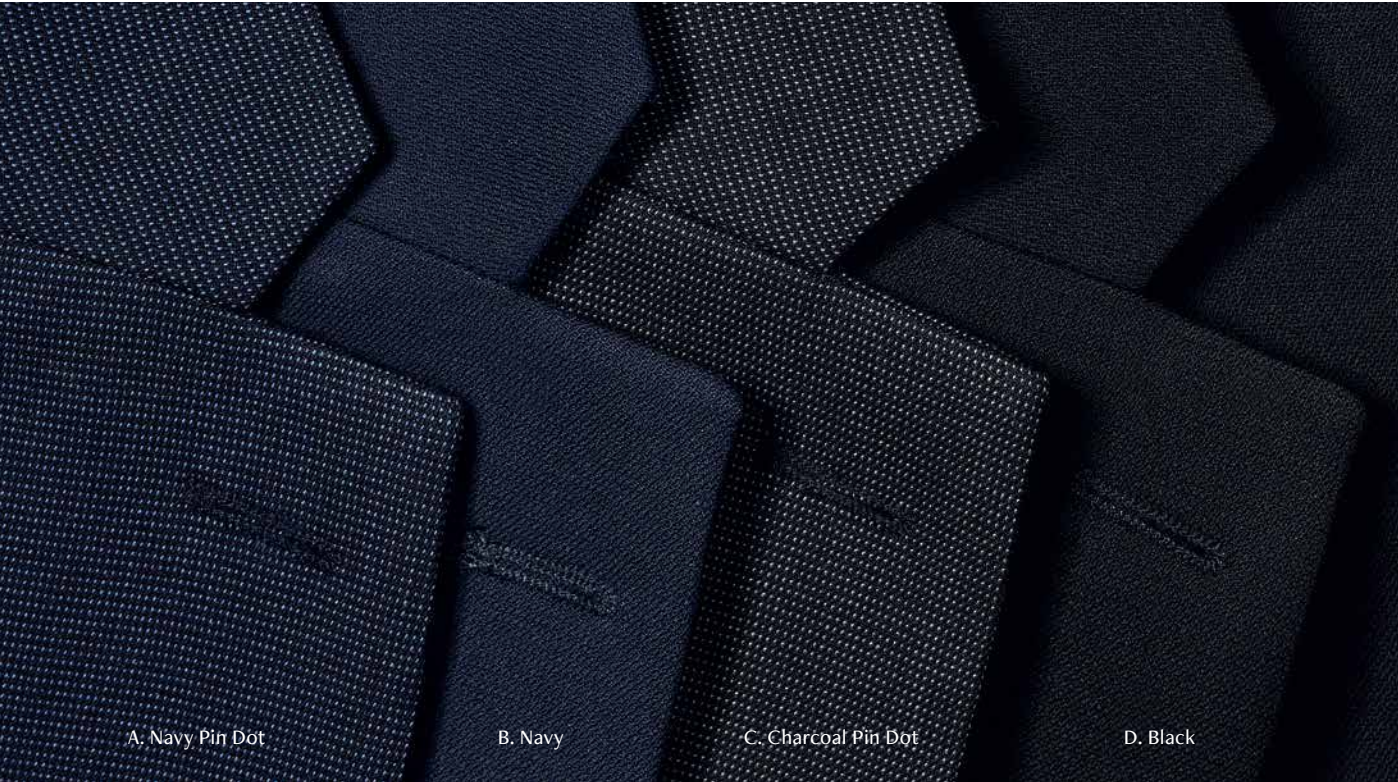
Centre back length at size 40R = 62cm

PARTICULARLY SUITABLE FOR:



FABRIC INFORMATION

Our ECLIPSE collection is available in 4 fabric colour choices.



64% Polyester
34% Viscose
2% Lycra



Midweight
Fabric



Machine
Washable



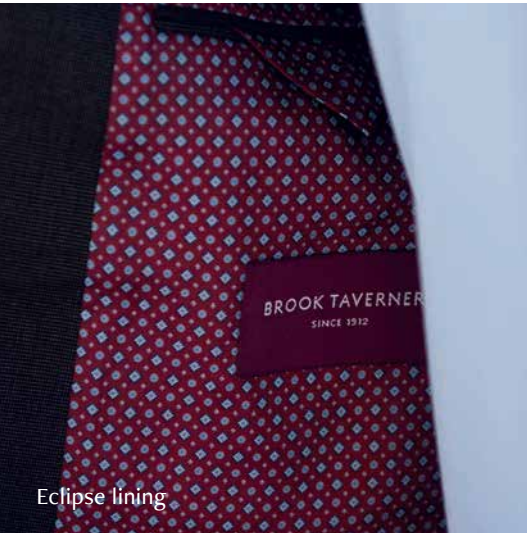
Very Durable -
Martindale Test
> 100,000 rubs

← 14% →

High Level
of Stretch



High Level
of Stain
Resistance



For businesses looking to present a stylish edge to their staff. With design in its DNA this range combines fine tailored lines, fashionable pin dot weaves and a durable Teflon coating - providing the perfect mix of form and function. Our Eclipse Collection delivers on trend, on time and on budget. 2020 sees the launch of a new women's jacket, featuring recycled polyester.



15 Recycled bottles
used per suit
NEW Vega Jacket



WASHCARE INSTRUCTIONS



Wool
Cycle



Wash
Separately



Reshape
garments
naturally



Do NOT
tumble dry



Cool iron over
damp cloth



Alternatively,
garments can
be dry cleaned